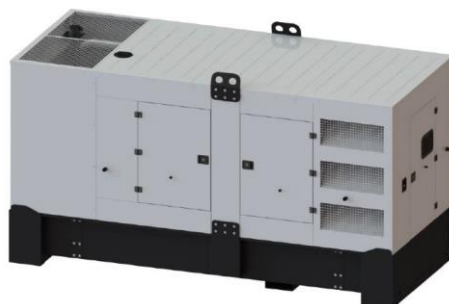


## GENERAL DATA

<b>MODEL :</b>	FDG601SA
<b>ESP :</b>	660 kVa
<b>PRP :</b>	601 kVa
<b>VOLTAGE :</b>	400V
<b>FREQUENCY :</b>	50 Hz
<b>CURRENT :</b>	866 A
<b>FUEL :</b>	Diesel
<b>WEIGHT :</b>	5150 KG
<b>DIMENSIONS :</b>	4560 x 1961 x 2521 mm



## ENGINE

<b>BRAND :</b>	Scania
<b>TYPE :</b>	DC26 078A 02-11
<b>POWER :</b>	511 kW
<b>ROTATION PAR MINUTE</b>	1500
<b>ENGINE GOVERNOR</b>	Electronic
<b>No of cylinder :</b>	8
<b>Displacement :</b>	16,4L
<b>OIL capacity :</b>	48L

## ALTERNATOR

<b>BRAND :</b>	Leroy Somer
<b>TYPE :</b>	TAL 047E
<b>IP PROTECTION :</b>	IP23
<b>INSULATION CLASS :</b>	H

## GENERAL EQUIPMENT

COMAP IL3 AMF 25 controller  
Engine preheating with thermostat  
Battery charger  
Schneider 4 poles circuit breaker  
Emergency stop  
Silenced canopy made with Al.Zn  
Standard RAL 7032  
Fuel inlet outside of the canopy  
Fuel level measurement  
Transportation brackets

## FUEL

Fuel tank :	990 L
Autonomy 100% load :	8,1 H
Fuel consumption :	
50% charge :	63,4 L/H
75% charge :	90,8 L/H
100% charge :	121,7 L/H
110% charge :	133,3 L/H

**Dutry Power Roeselare**  
brugsesteenweg 512  
**8800 Roeselare**  
**+32(0)51 20 00 88**

**Dutry Power SPL**  
Bergensesteenweg 838  
**1600 Sint Pieters Leeuw**  
**+32(0)2 377 75 23**

**Dutry Power Lux**  
Rue Andre Feher 3/D  
**6900 Aye**  
**+32 (0)84 31 69 27**